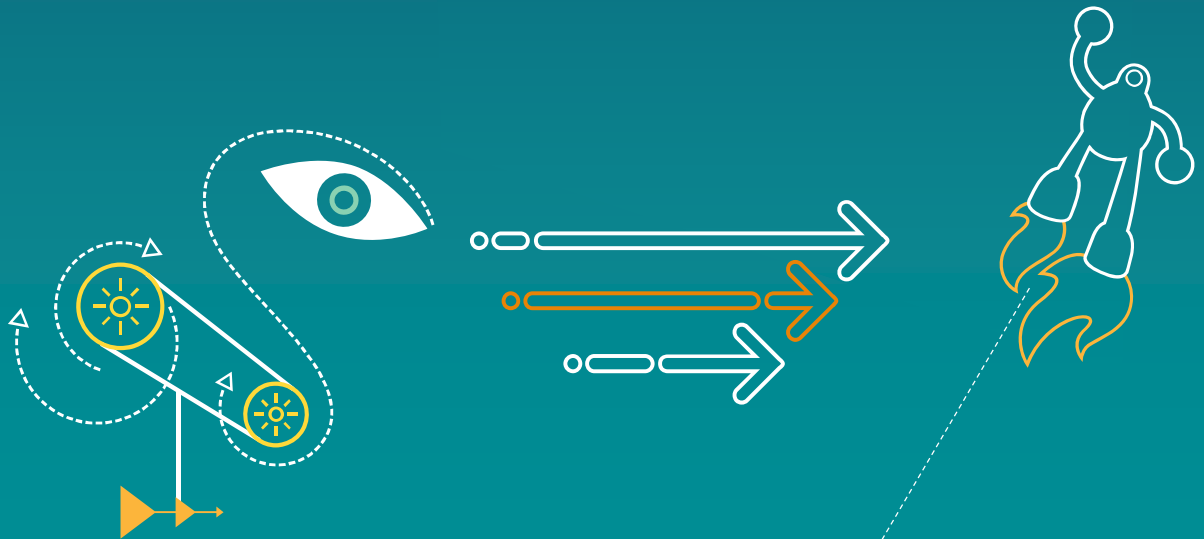


R. Joshi, V. Seregin, K. Rapaka, Y.-K. Wang M. Karczewicz

JCTVC-V0059

Suggested text specification and software fixes for constrained intra prediction



Method 1

- For constrained intra prediction
 - Allow intra prediction reference samples to be from intra or intra block copy
 - Allow intra block copy prediction reference samples to be from intra or intra block copy prediction

Method 1

- Specification changes

- Introduce definition of intra block copy prediction
- Change the semantics for constrained_intra_pred_flag
- Add bit-stream conformance constraint specifying that all reference samples needed to form intra block copy prediction are coded using intra prediction or intra block copy prediction
 - In case of non-444 formats, include samples needed for chroma interpolation

- Software changes

- Modify isIntraBC(.) function
 - For bi-predictive block, check that both reference indices refer to the current picture
- Add bit-stream conformance constraint for constraint intra prediction
 - Take samples needed for chroma interpolation into account

Method 2

- The meeting notes for BoG report JCTVC-O352
 - For constrained intra prediction:
 - An IntraBC block is regarded as available for determination of intra prediction reference samples
 - Informative note suggesting that an encoder should ordinarily avoid referencing reconstructed pixels from inter blocks when encoding an IntraBC block.

Method 2

- Specification changes
 - Definition of intra block copy prediction
- Software changes
 - Modify isIntraBC(.) function
 - For bi-predictive block, check that both reference indices refer to the current picture
 - While checking reference samples for intra block copy prediction, take the samples needed for chroma interpolation into account

Summary

- For constrained intra prediction

Method 1	Reference samples		
	Intra	Intra block copy	inter
Intra prediction	Yes	Yes	No
Intra block copy prediction	Yes	Yes	No

Method 2	Reference samples		
	Intra	Intra block copy	inter
Intra prediction	Yes	Yes	No
Intra block copy prediction	Yes	Encoder	Encoder