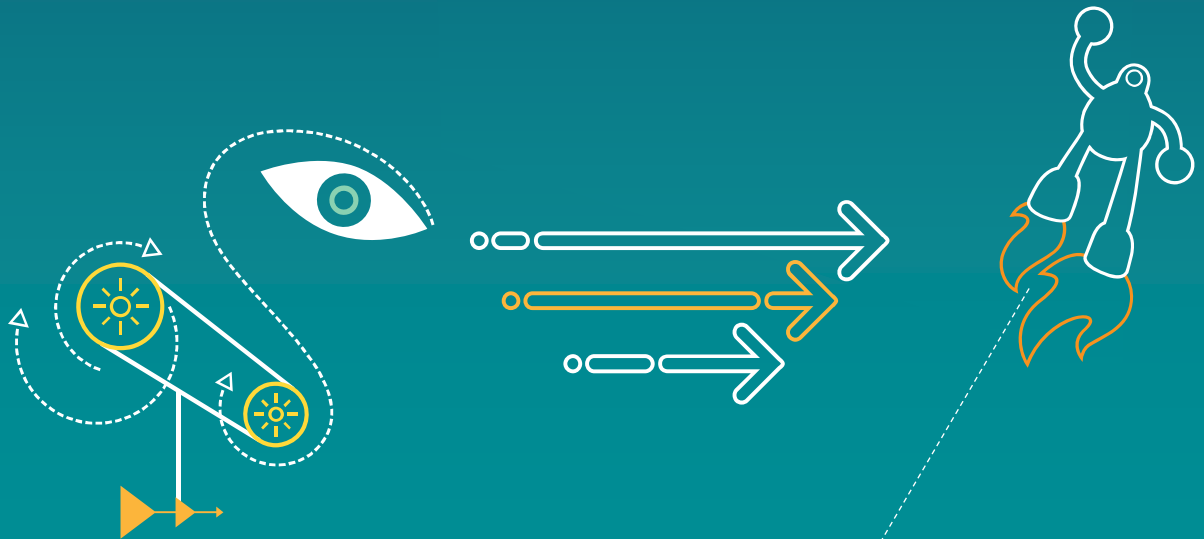


Chao Pang, Ying Chen, Joel Sole, Marta Karczewicz

---

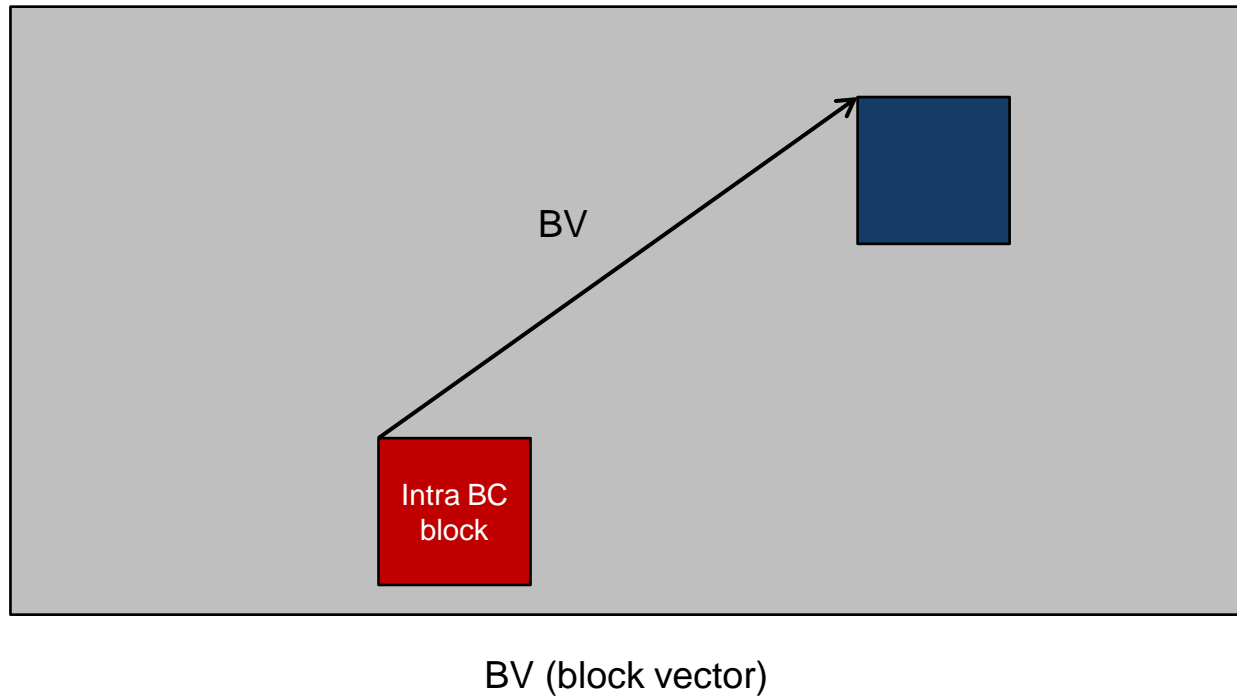
## JCTVC-R0189 Non-SCCE1: Intra block copy deblocking

---



# Intra block copy (Intra BC)

---



The search region for Intra BC is the entire frame for both intra- and inter- frames.

# Intra BC deblocking

---

- Intra deblocking is used for Intra BC in SCM 1.0 ( $B_s = 2$ )
- The filter strength may be too strong for Intra BC
  - Intra BC usually work on sharp edges, e.g. texts
  - Two neighboring Intra BC blocks with same block vector
  - Like inter motion compensation

# Proposed

---

- Intra BC is treated as Inter during the deblocking process;
- Intra BC block is converted to be a uni-directionally predictive Inter block
  - with the block vector being the motion vector
  - with the current picture being the reference picture
- Deblocking module unchanged, with no extra implementation burden in SCC extension

# Lossy results

	All Intra			Random Access			Low delay B		
	G/Y	B/U	R/V	G/Y	B/U	R/V	G/Y	B/U	R/V
RGB, text & graphics with motion, 1080p	0.0%	-0.9%	-0.9%	-0.3%	-1.7%	-1.6%	-0.5%	-1.8%	-1.6%
RGB, text & graphics with motion,720p	0.0%	-0.7%	-0.6%	-0.1%	-1.0%	-1.0%	-0.2%	-1.1%	-1.1%
RGB, mixed content, 1440p	0.0%	-0.3%	-0.3%	-0.1%	-0.7%	-0.8%	-0.3%	-0.7%	-0.8%
RGB, mixed content, 1080p	0.0%	-0.5%	-0.5%	-0.1%	-1.0%	-1.1%	-0.3%	-1.6%	-1.7%
RGB, Animation, 720p	0.0%	0.0%	0.0%	0.0%	-0.1%	0.0%	0.0%	0.0%	0.0%
RGB, camera captured, 1080p	0.0%	0.0%	0.0%	0.0%	0.0%	0.0%	0.0%	0.0%	0.0%
YUV, text & graphics with motion, 1080p	0.0%	-0.7%	-0.7%	-0.1%	-1.3%	-1.3%	-0.3%	-1.6%	-1.3%
YUV, text & graphics with motion,720p	0.0%	-0.3%	-0.3%	0.0%	-0.7%	-0.8%	0.0%	-0.7%	-1.0%
YUV, mixed content, 1440p	0.0%	-0.4%	-0.4%	0.0%	-1.1%	-1.0%	-0.1%	-1.2%	-1.2%
YUV, mixed content, 1080p	0.0%	-0.8%	-0.7%	-0.1%	-1.7%	-1.6%	-0.3%	-3.5%	-3.4%
YUV, Animation, 720p	0.0%	0.0%	0.0%	0.0%	0.0%	0.0%	0.0%	-0.5%	-0.1%
YUV, camera captured, 1080p	0.0%	0.0%	0.0%	0.0%	0.1%	0.0%	0.0%	0.0%	-0.2%
Enc Time[%]	102%			100%			98%		
Dec Time[%]	99%			97%			100%		

# Conclusions

---

- Intra BC is treated as Inter in deblocking process
- Deblocking module unchanged, resulting in no extra implementation cost and certain compression performance improvement

# Thank you

All data and information contained in or disclosed by this document is confidential and proprietary information of Qualcomm Incorporated and all rights therein are expressly reserved. By accepting this material the recipient agrees that this material and the information contained therein is to be held in confidence and in trust and will not be used, copied, reproduced in whole or in part, nor its contents revealed in any manner to others without the express written permission of Qualcomm Incorporated.

© 2013 QUALCOMM Incorporated and/or its subsidiaries. All Rights Reserved.

Qualcomm is a trademark of Qualcomm Incorporated, registered in the United States and other countries. Other products and brand names may be trademarks or registered trademarks of their respective owners

References in this presentation to “Qualcomm” may mean Qualcomm Incorporated, Qualcomm Technologies, Inc., and/or other subsidiaries or business units within the Qualcomm corporate structure, as applicable.

Qualcomm Incorporated includes Qualcomm’s licensing business, QTL, and the vast majority of its patent portfolio. Qualcomm Technologies, Inc., a wholly-owned subsidiary of Qualcomm Incorporated, operates, along with its subsidiaries, substantially all of Qualcomm’s engineering, research and development functions, and substantially all of its product and services businesses, including its semiconductor business.

