



# Non-CE8: Additional Simulation Results of SAO and ALF

Tzu-Der Chuang, Yi-Wen Chen, Jiang-Liang Lin, Yu-Wen Huang, Shawmin Lei



Presented by Ching-Yeh Chen  
8<sup>th</sup> JCT-VC Meeting in San Jose  
1-10 February, 2012

# Overall Summary

- SAO and ALF on/off experiments using common test condition (CTC) sequences and additional fifteen 720p and ten 1080p sequences
  - Investigate objective and subjective coding gains
- Results
  - Not only objective coding gains but also subjective coding gains
  - The BD-rate improvement is much large in high resolution videos
  - SAO takes 0.5% encoding time and 2% decoding time.
  - ALF takes 7% encoding time and 15% decoding time.
  - Not only objective but also subjective coding gains, especially for HD
- Suggest to keep both SAO and ALF in HEVC

	CTC Sequences				Additional 720p/1080p			
HE Condition	AI	RA	LDB	LDP	AI	RA	LDB	LDP
<b>SAO+ALF Coding Gain</b>	2.4%	5.1%	5.3%	15.3%	3.7%	7.6%	8.2%	28.6%
<b>ALF Coding Gain</b>	1.6%	3.3%	2.8%	4.2%	2.8%	4.7%	4.3%	8.7%
<b>SAO Coding Gain</b>	0.5%	1.3%	2.1%	2.6%	0.5%	1.9%	2.6%	3.4%

# Consistent Data for HD Sequences

		CTC Sequences				Additional 720p/1080p			
Condition		HE-AI	HE-RA	HE-LDB	HE-LDP	HE-AI	HE-RA	HE-LDB	HE-LDP
SAO OFF & ALF OFF	BD-rate	2.4%	5.1%	5.3%	15.3%	3.7%	7.6%	8.2%	28.6%
	HD Part	3.1%	6.4%	6.5%	22.2%				
SAO ON & ALF OFF	BD-rate	1.6%	3.3%	2.8%	4.2%	2.8%	4.7%	4.3%	8.7%
	HD Part	2.2%	3.7%	3.1%	6.5%				
SAO OFF & ALF ON	BD-rate	0.5%	1.3%	2.1%	2.6%	0.5%	1.9%	2.6%	3.4%
	HD Part	0.5%	1.4%	2.5%	3.0%				

# Common Test Condition Sequences

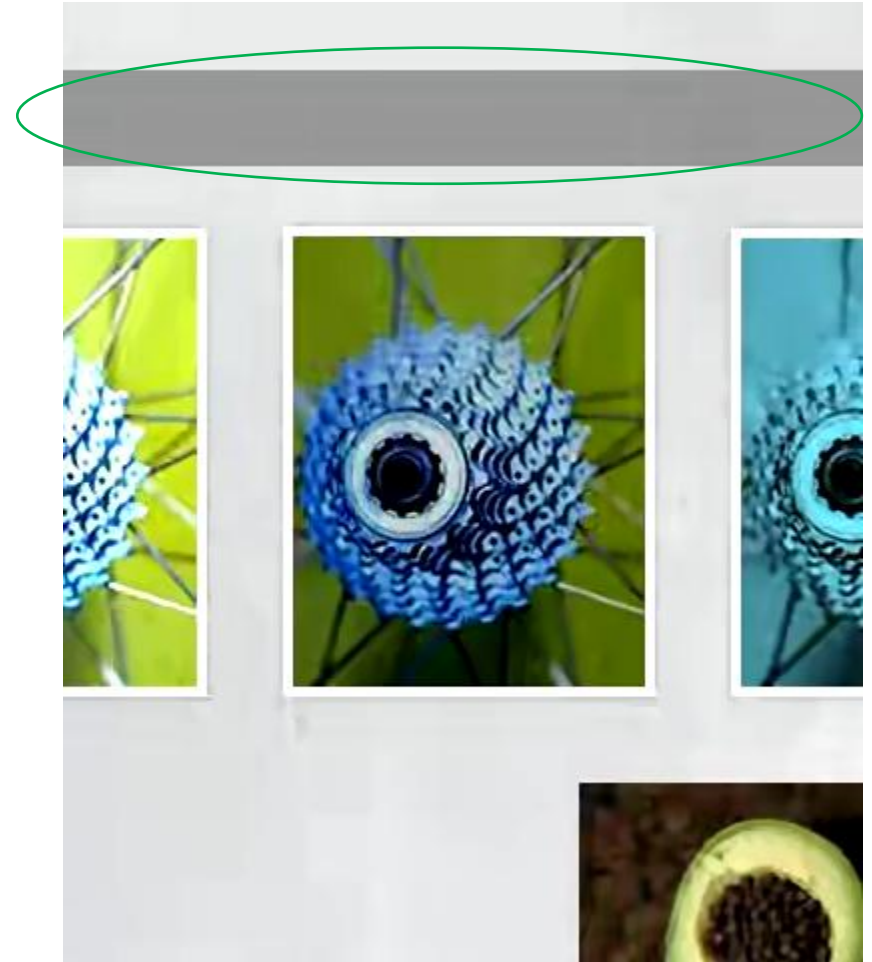
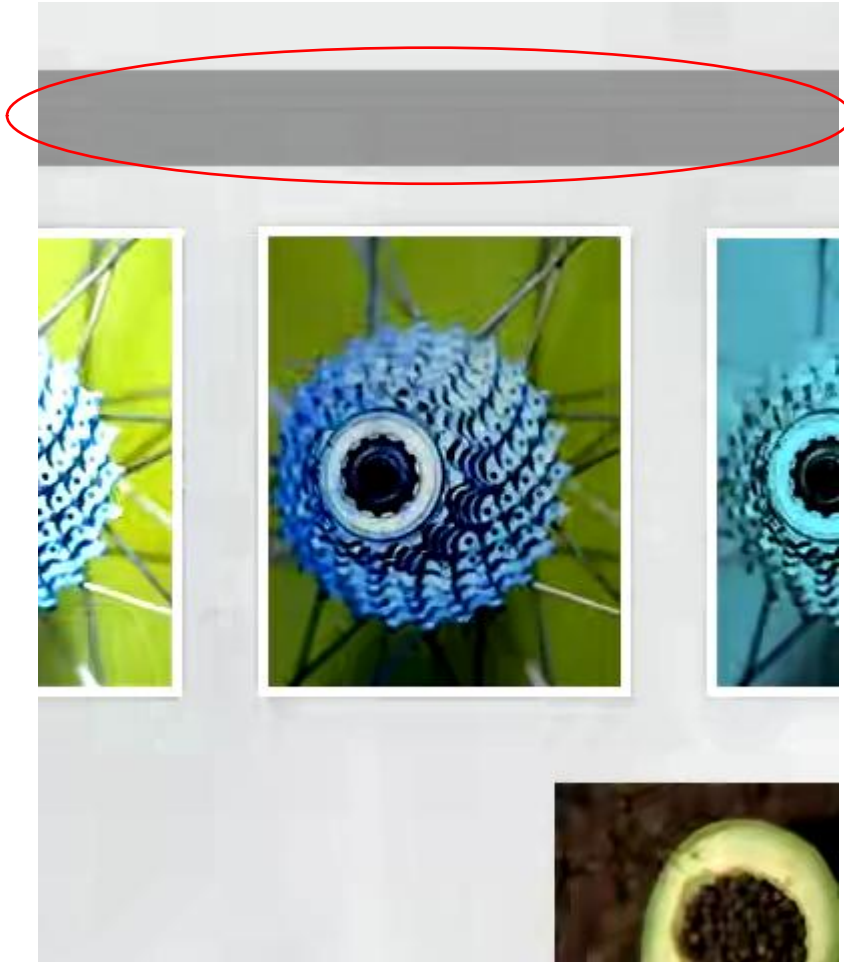
- Many sequences in the common test conditions are smaller than 720p, which cannot represent future applications well
  - Class A: 2560x1600
  - Class B: 1920x1080
  - Class C: 832x480
  - Class D: 416x240
  - Class E: 1280x720
  - Class F: 1280x720/1024x768/832x480
- Today even the mainstream videos on smart phones are 720p and will become 1080p soon.
- TVs are definitely 1080p now and will become larger.

# Additional Test Sequences

- All HD sequences we obtained for experiments during the VCEG KTA software study period
- Test everything instead of randomly pick some
  - Fifteen 720p and ten 1080p sequences

BigShips_1280x720_600.yuv
City_1280x720_900.yuv
Crew_1280x720_600.yuv
Cyclists_1280x720_600.yuv
Harbour_1280x720_600.yuv
Jets_1280x720_550.yuv
Night_1280x720_460.yuv
Optis_1280x720_600.yuv
Panslow_1280x720_550.yuv
Preakness_1280x720_600.yuv
Raven_1280x720_600.yuv
Sailormen_1280x720_600.yuv
Sheriff_1280x720_600.yuv
ShuttleStart_1280x720_600.yuv
Spincalendar_1280x720_550.yuv

blue_sky_1920x1080_106.yuv
pedestrian_area_1920x1080_375.yuv
riverbed_1920x1080_250.yuv
rush_hour_1920x1080_500.yuv
station2_1920x1080_313.yuv
sunflower_1920x1080_500.yuv
toys_and_calendar_1920x1080_250.yuv
tractor_1920x1080_690.yuv
vintage_car_1920x1080_300.yuv
walking_couple_1920x1080_250.yuv



Sequence : **SlideShow**, Configuration : **HE-LDP**, QP : **37**, POC : **400** , artifact exists for POC = **399 - 472**



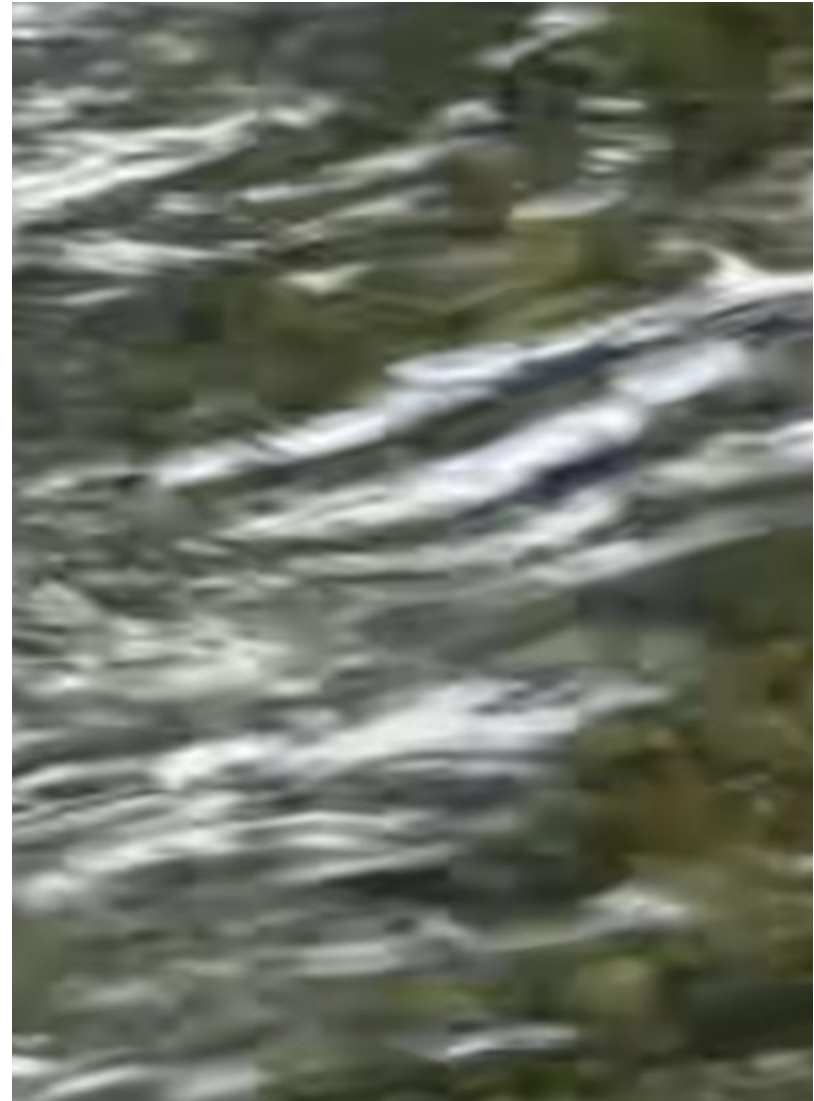


ALF-OFF

HM-5.0

JCTVC-H0277

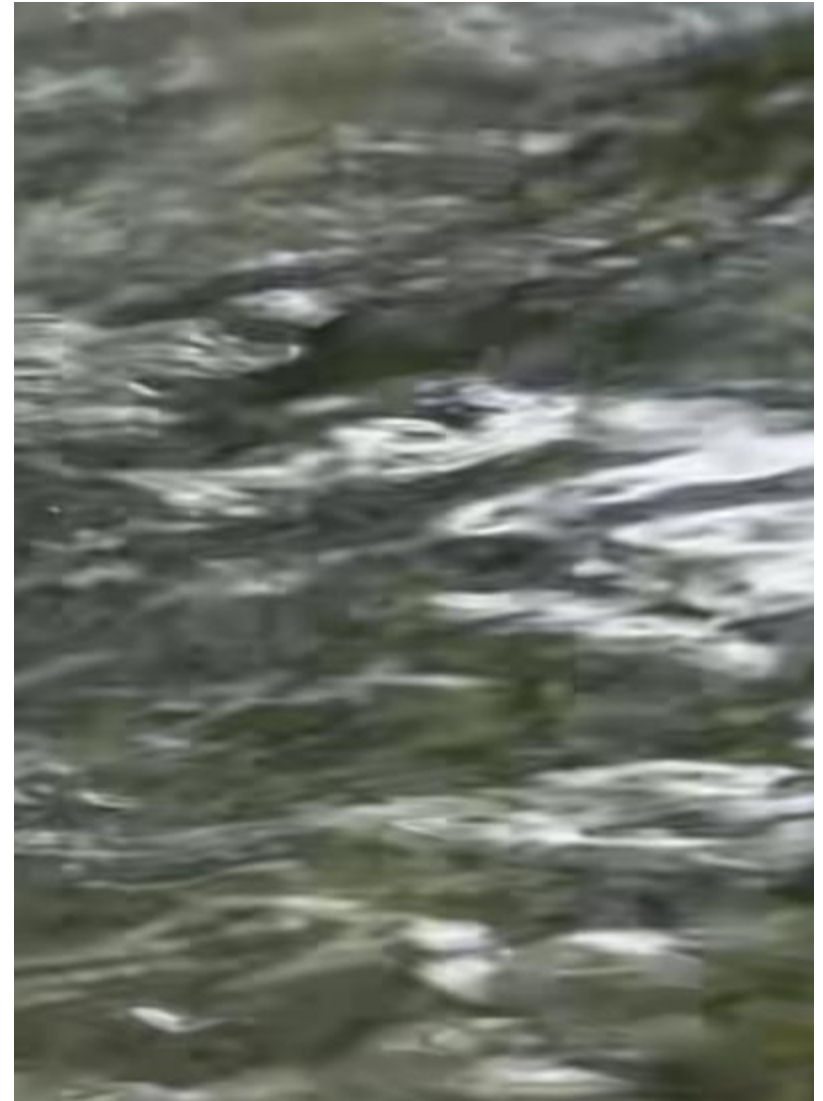
Severe blocking artifact



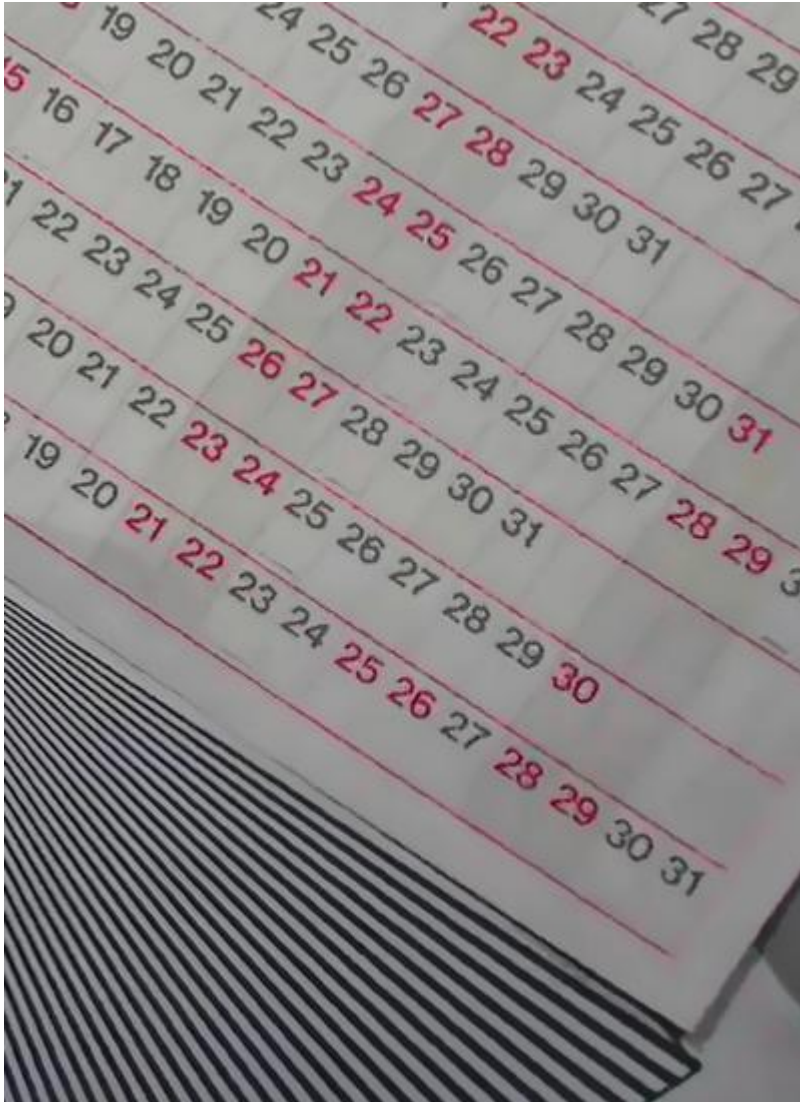
Sequence : RiverBed, Configuration : HE-LDP, QP : 37, POC : 35 , artifact exists for most of inter pictures



More visible blocking artifact



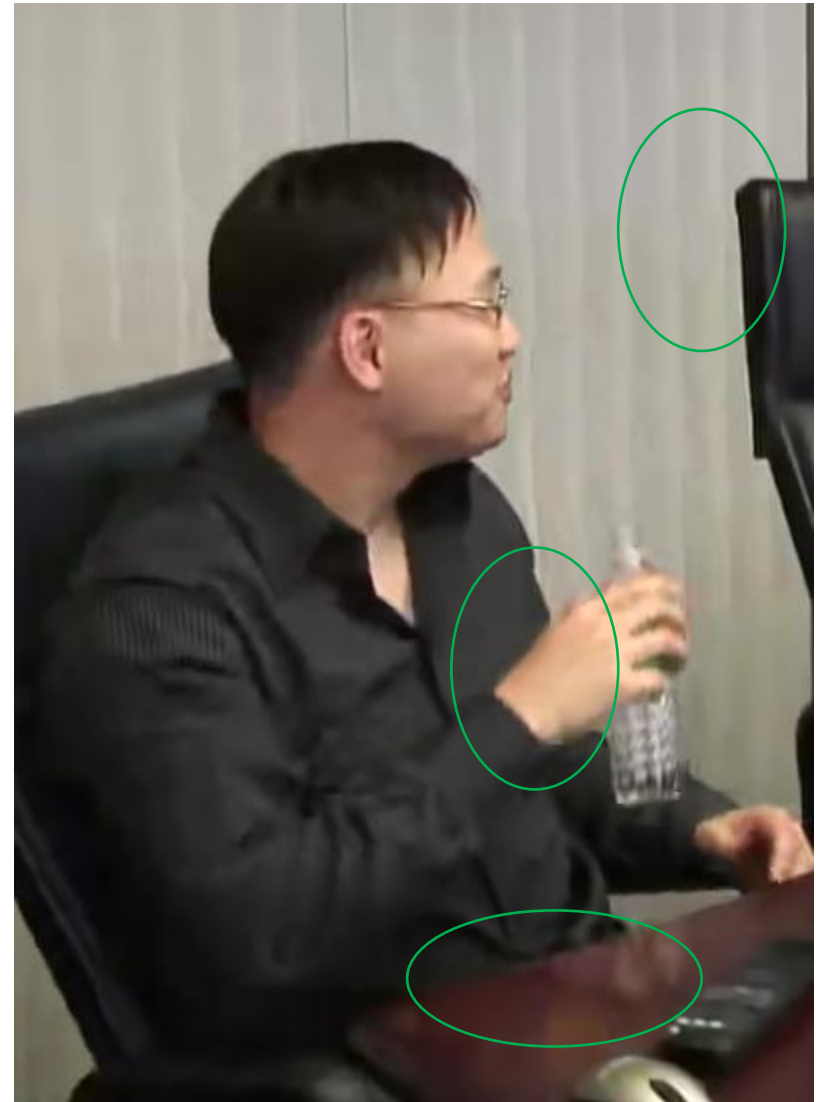
Sequence : **RiverBed**, Configuration : **HE-LDP**, QP : **32**, POC : **117** , artifact exists for **most of inter pictures**



More detail retained

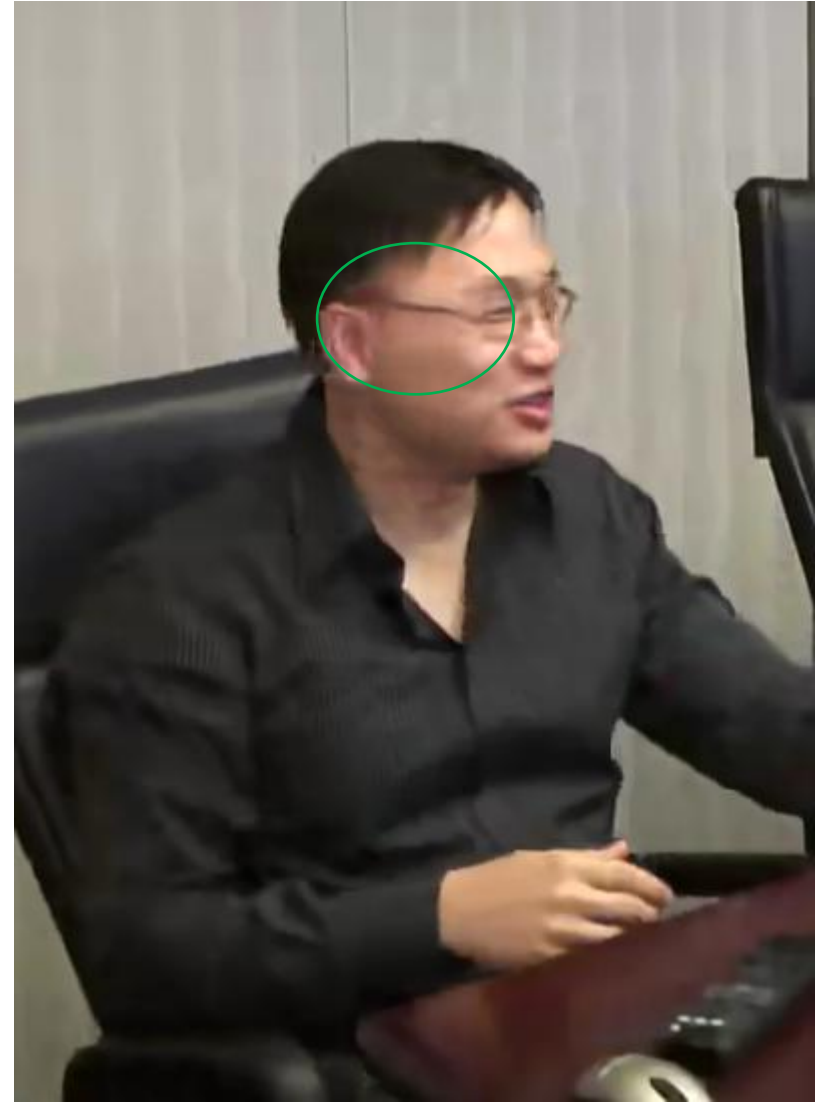


Sequence : SpinCalendar, Configuration : HE-LDP, QP : 37, POC : 212, artifact exists for POC = 183 - 331

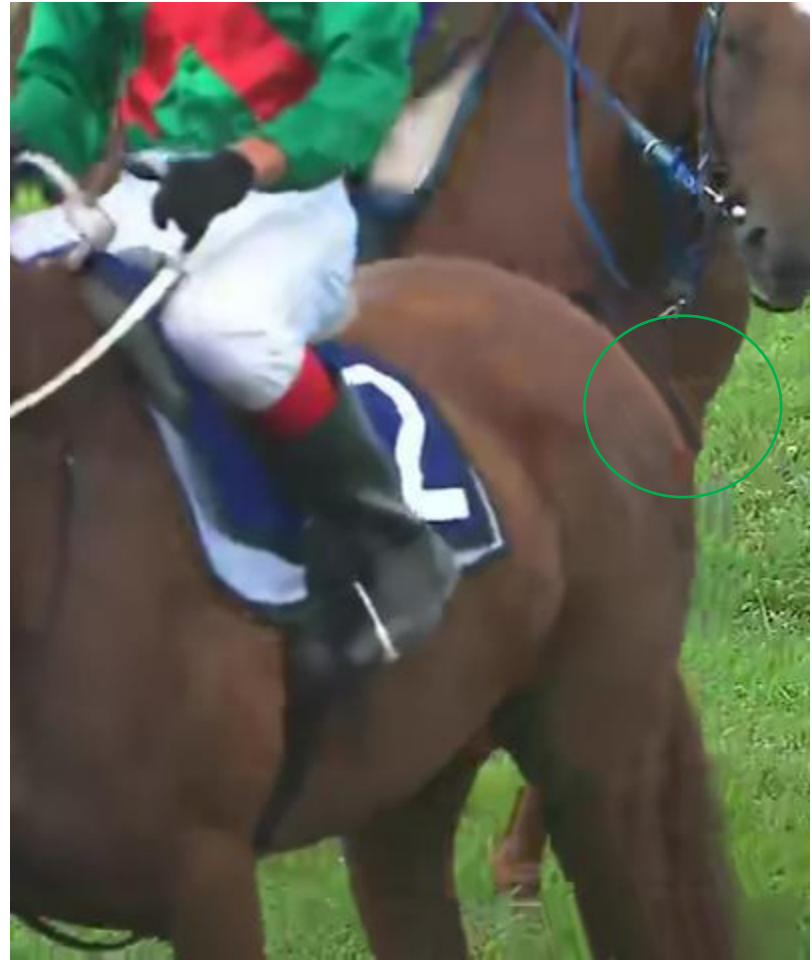


Sequence : **Vidyo1**, Configuration : **HE-LDP**, QP : **37**, POC : **205** , artifact exists for POC = **199 - 208**





Sequence : **Vidyo1**, Configuration : **HE-LDP**, QP : **37**, POC : **331** , artifact exists for POC = **328 - 335**



Sequence : RaceHorsesC, Configuration : HE-LDP, QP : 37, POC : 82 , artifact exists for POC = 81 - 83



Sequence : PartyScene, Configuration : HE-LDP, QP : 37, POC : 350 , artifact exists for POC = 11, 62, 287, 315, 350, 454, 475

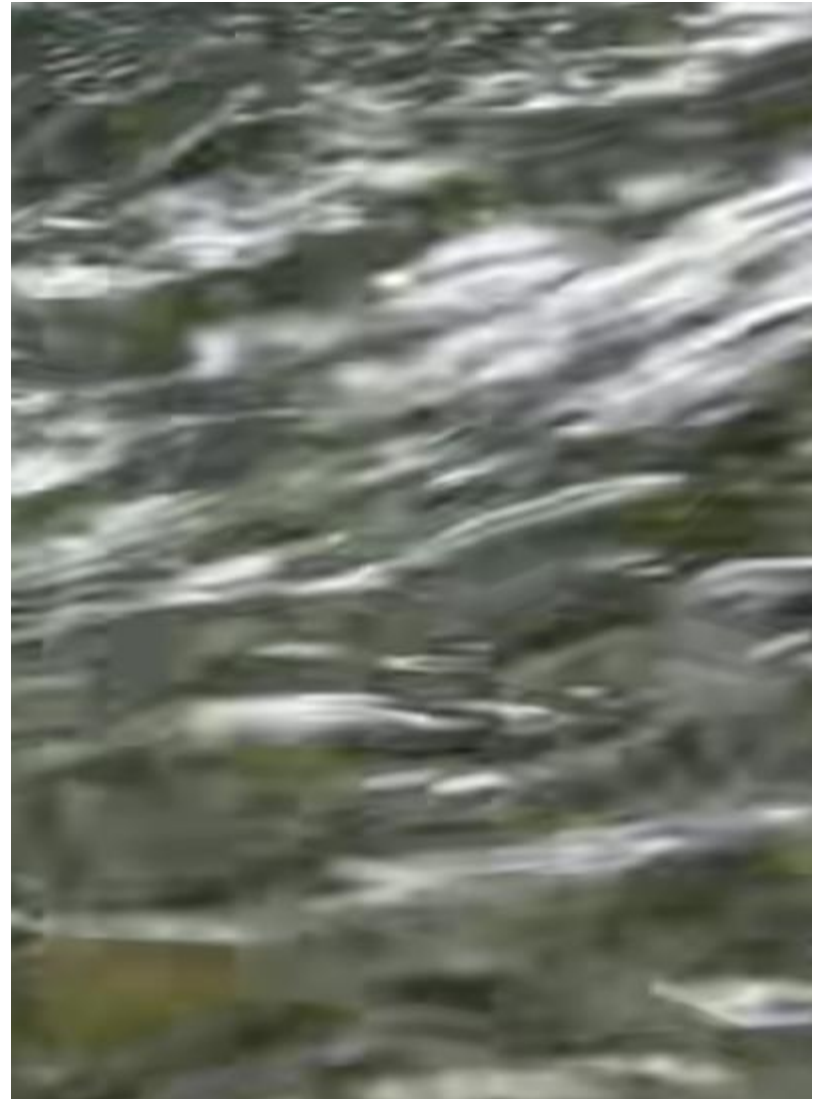


ALF-OFF

HM-5.0

JCTVC-H0277

Severe blocking artifact



Sequence : **RiverBed**, Configuration : **HE-LDB**, QP : **37**, POC : **35** , artifact exists for **most of inter pictures**





Sequence : **Raven**, Configuration : **HE-LDB**, QP : **37**, POC : **139**



Sequence : **Raven**, Configuration : **HE-LDB**, QP : **37**, POC : **251**



Sequence : BQMall, Configuration : HE-RA, QP : 32, POC : 37 , artifact exists for POC = 36 - 39



Sequence : Crew, Configuration : HE-RA, QP : 37, POC : 117 , artifact exists for POC = 116 - 119





Sequence : **Crew**, Configuration : **HE-RA**, QP : 37, POC : 390 , artifact exists for POC = 389- 391



Sequence : **optis**, Configuration : **HE-RA**, QP : **37**, POC : **411** , artifact exists for POC = **410 - 412**



Sequence : **Kimono**, Configuration : **HE-RA**, QP : **37**, POC : **91** , artifact exists for POC = **88 - 91**



# Conclusion

- SAO objective and subjective gains have been verified in CE3 and many other proposals.
- In this proposal, it is shown that ALF can provide not only objective but also subjective gains on top of SAO, especially for HD sequences
- Suggest to keep both SAO and ALF in HEVC