

Anchor LC RA QP32

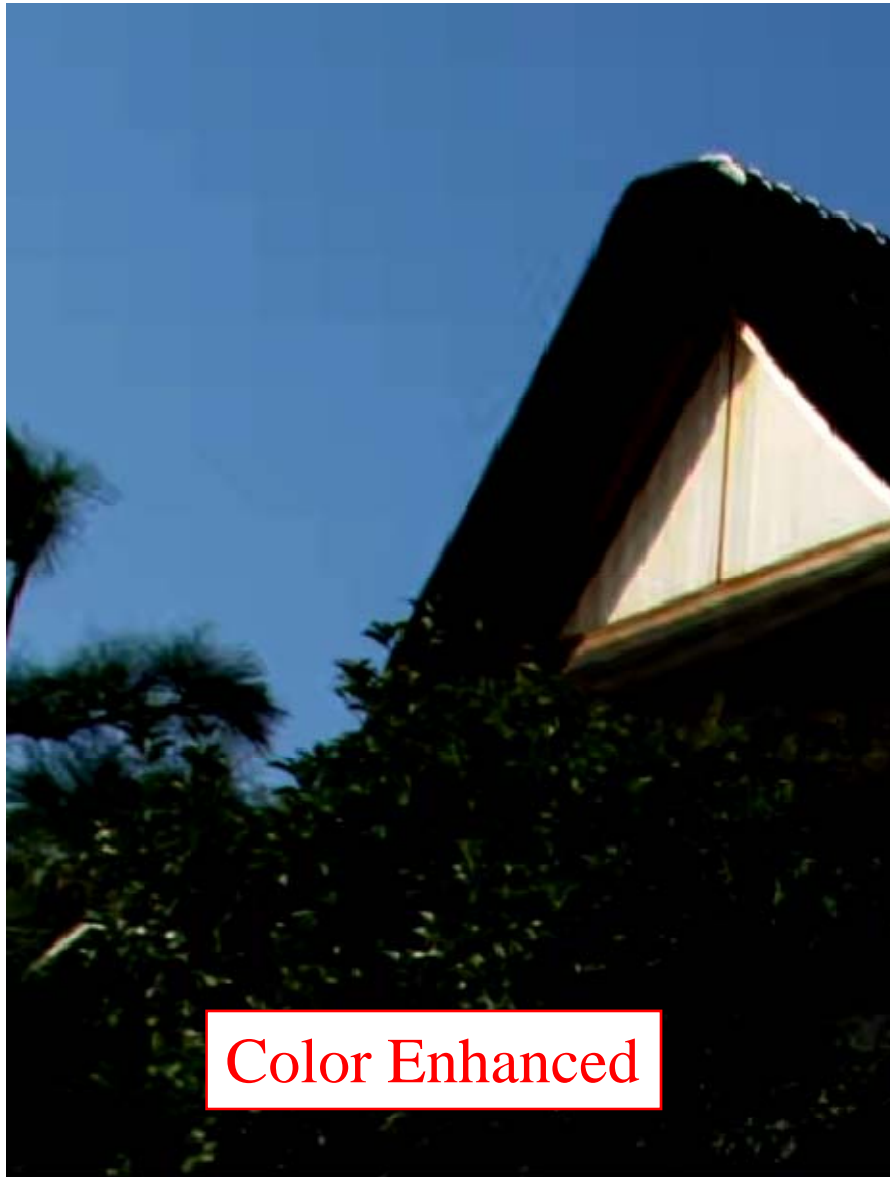


1.c+3.b Planar LC RA QP32

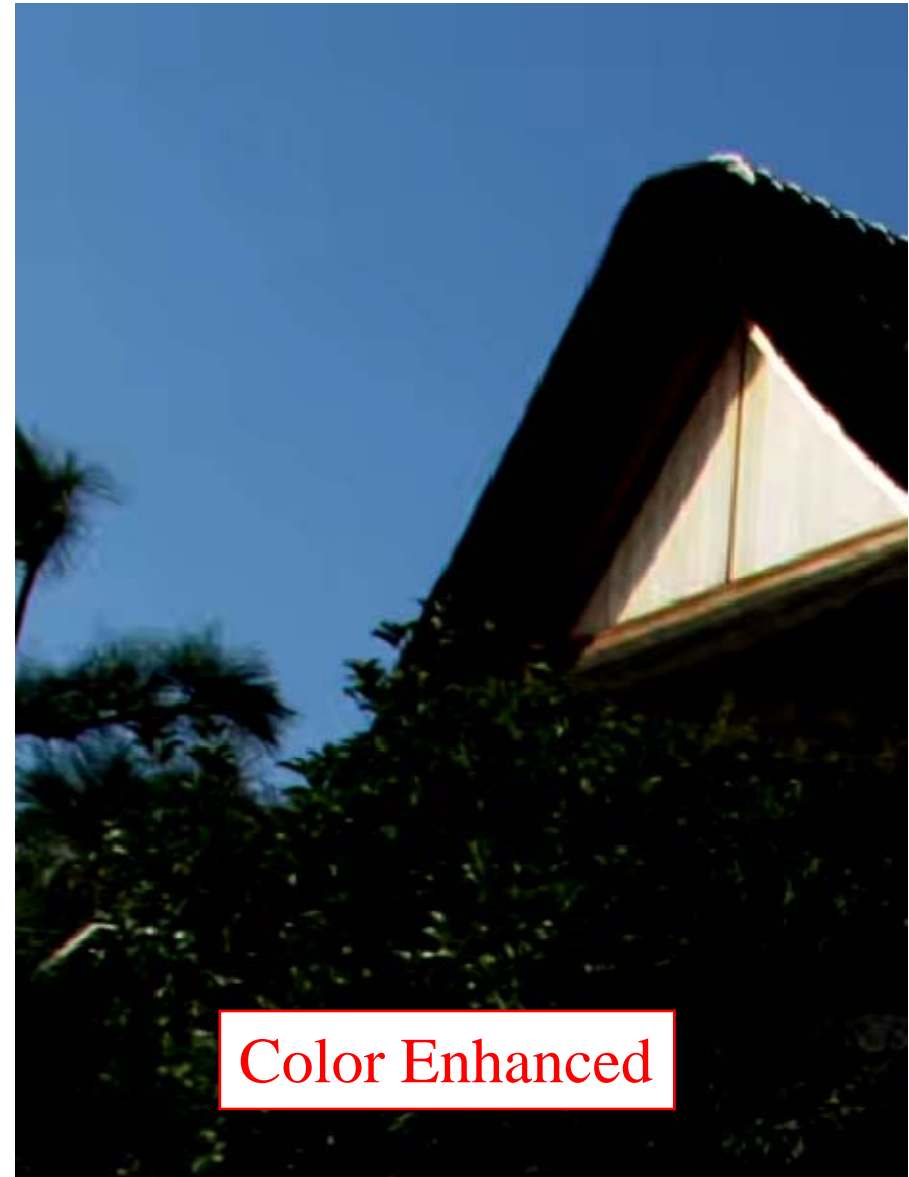


Blocking artifacts in sky regions are significantly reduced by Planar prediction.

Anchor LC RA QP32



1.c+3.b Planar LC RA QP32



Blocking artifacts in sky regions are significantly reduced by Planar prediction.

Anchor LC RA QP32

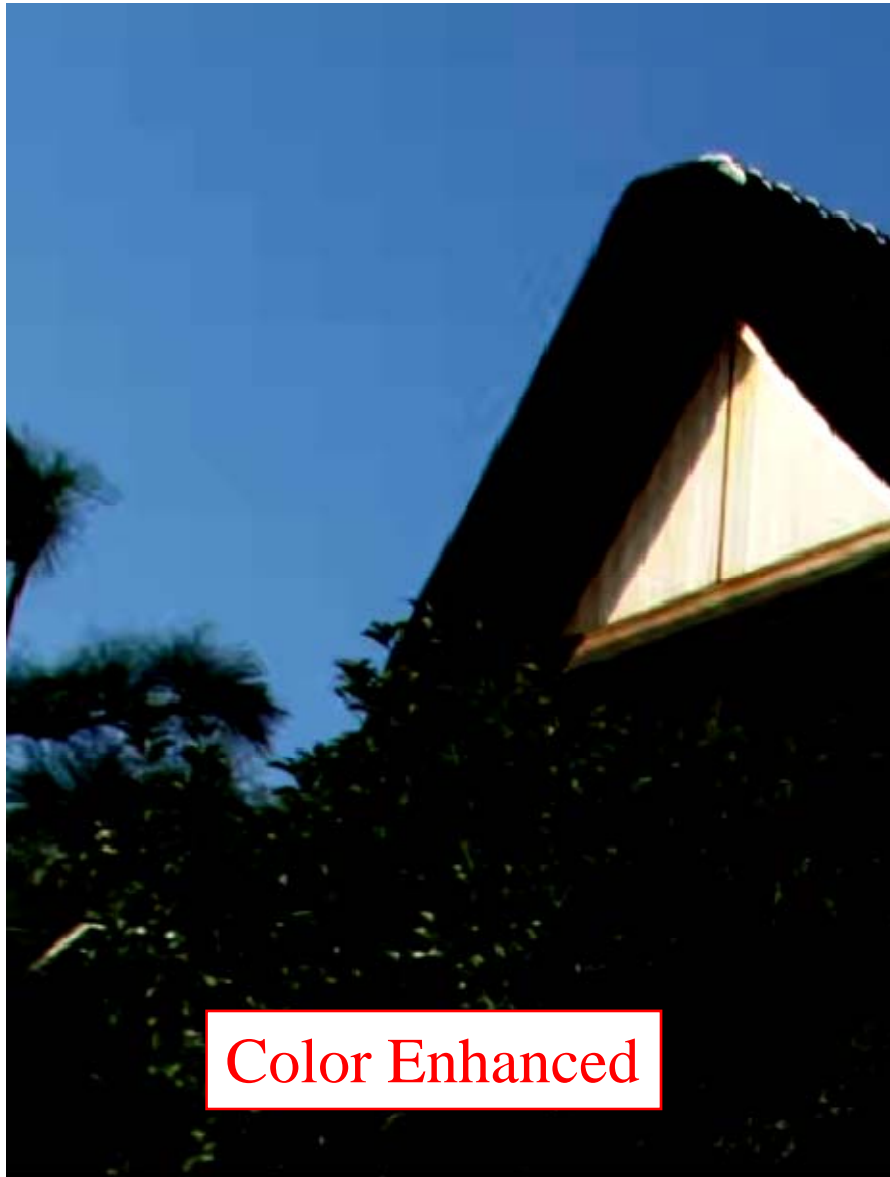


1.c+2.b+3.b Planar LC RA QP32

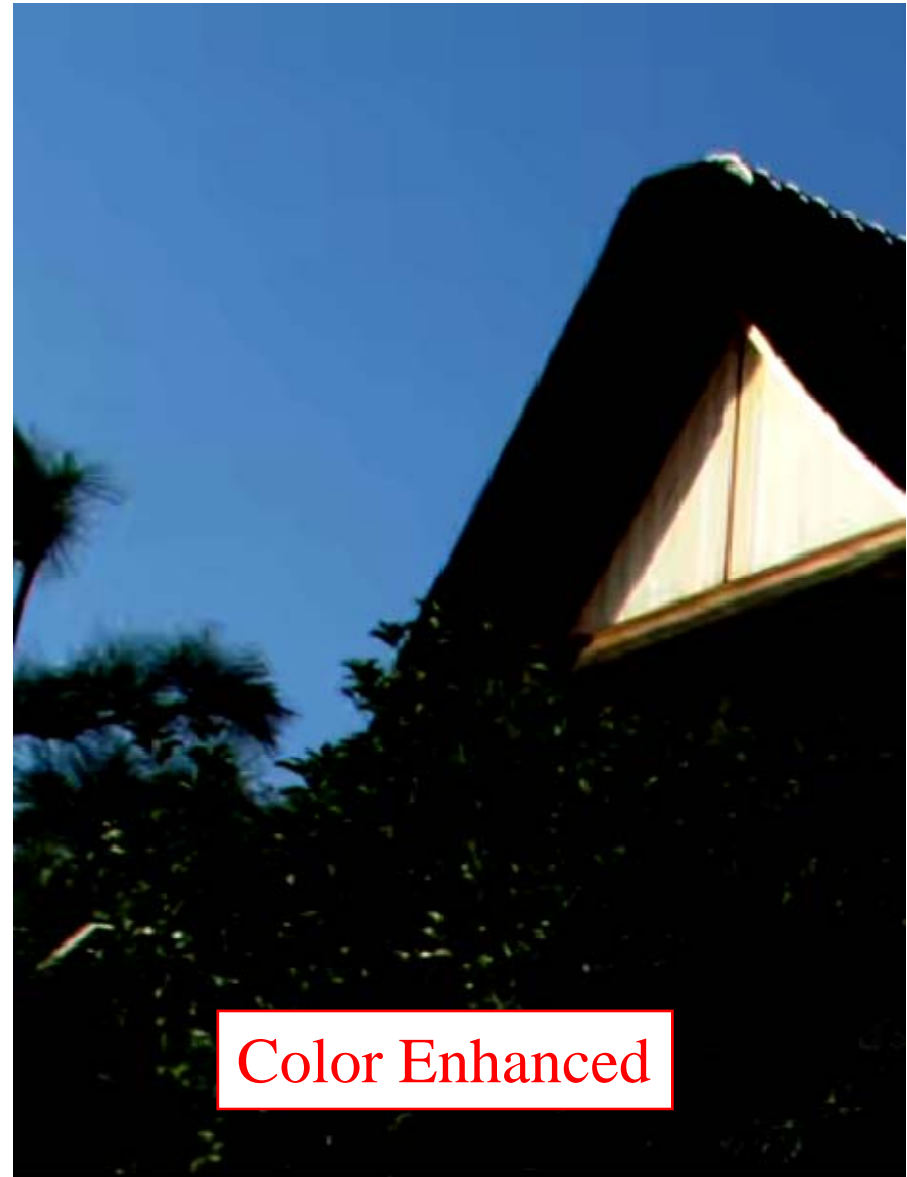


Blocking artifacts in sky regions are significantly reduced by Planar prediction.

Anchor LC RA QP32



1.c+2.b+3.b Planar LC RA QP32



Blocking artifacts in sky regions are significantly reduced by Planar prediction.

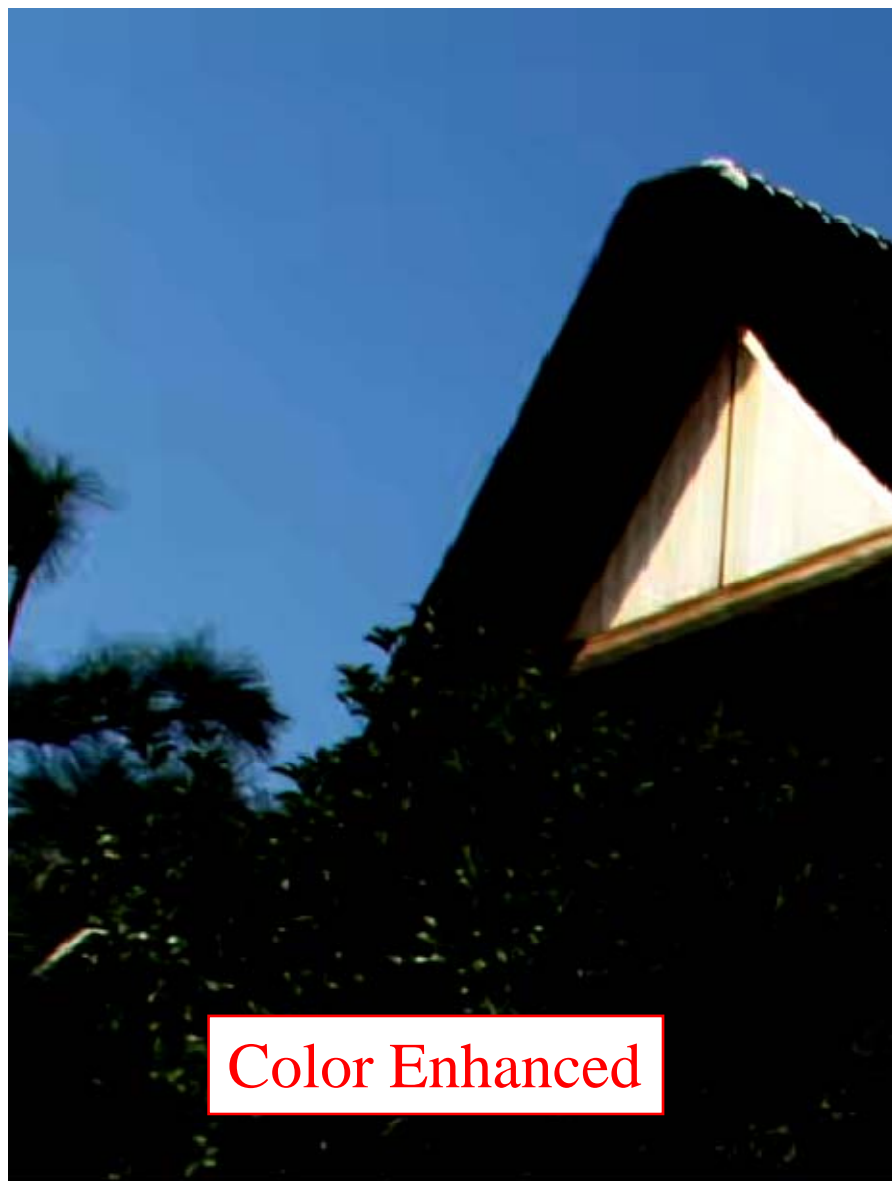
1.c+3.b Planar LC RA QP32



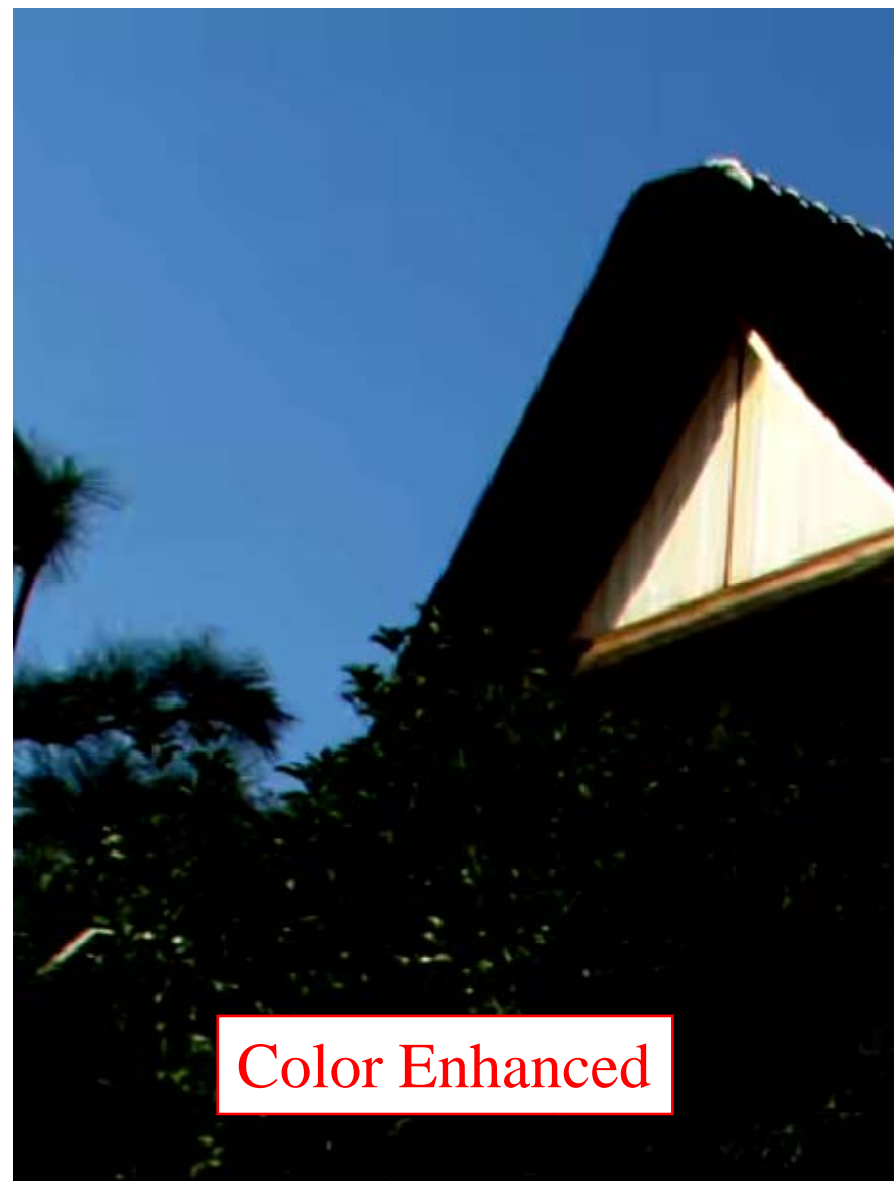
1.c+2.b+3.b Planar LC RA QP32



1.c+3.b Planar LC RA QP32



1.c+2.b+3.b Planar LC RA QP32



DCT and DST do not differentiate visual quality of sky regions much.