

Anchor LC RA QP32



Planar LC RA QP32



**Blocking artifacts in the face regions are significantly reduced by Planar prediction.**

Anchor LC RA QP32



Planar LC RA QP32



**Blocking artifacts in the face regions are significantly reduced by Planar prediction.**

Anchor LC RA QP32

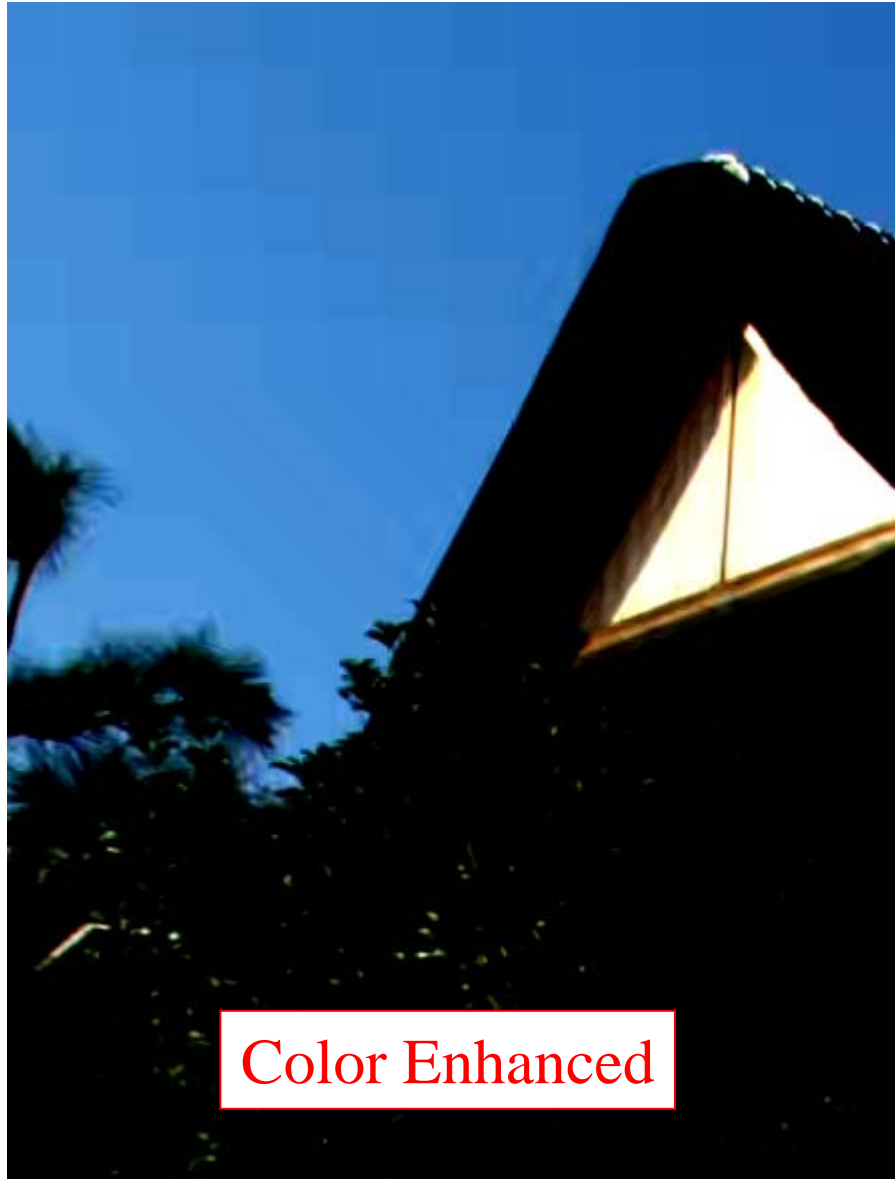


Planar LC RA QP32

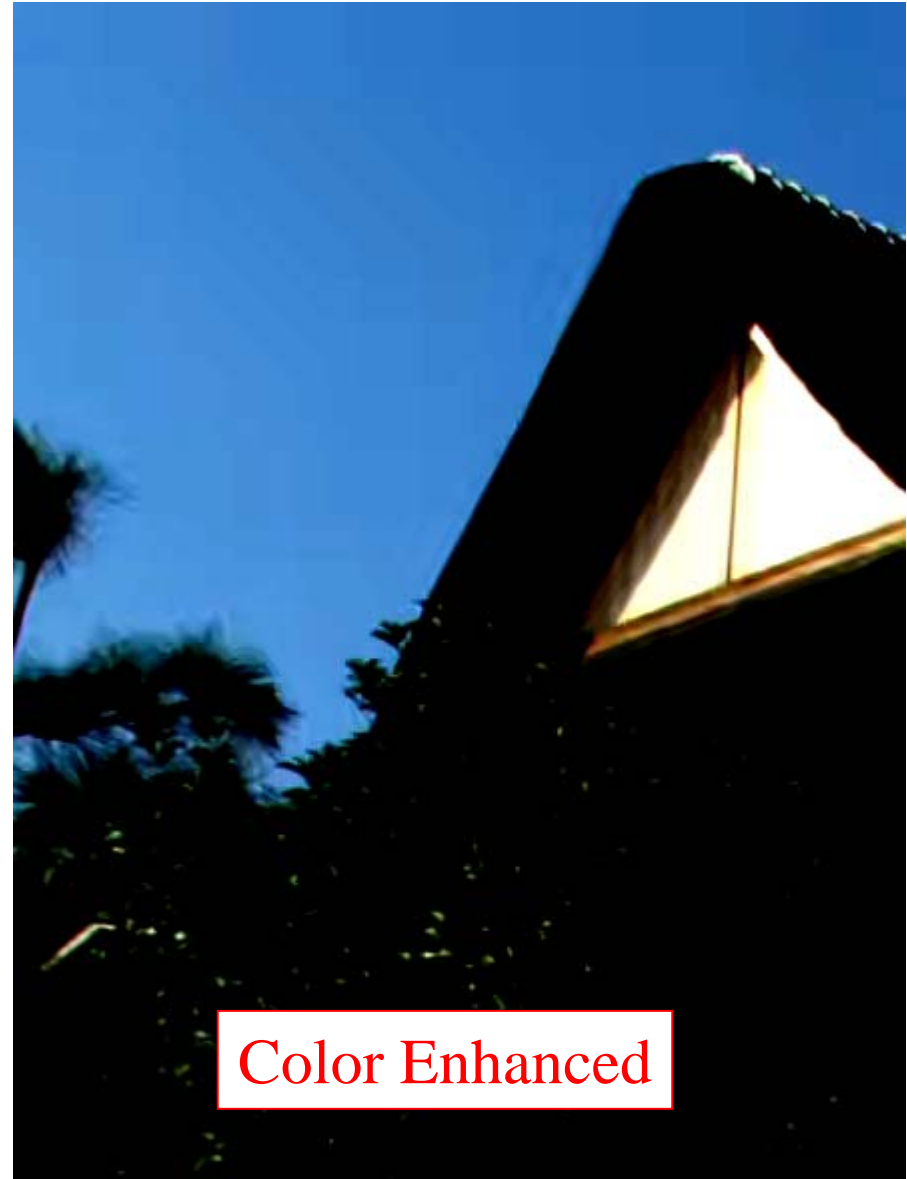


**Blocking artifacts in sky regions are significantly reduced by Planar prediction.**

Anchor LC RA QP32



Planar LC RA QP32



**Blocking artifacts in sky regions are significantly reduced by Planar prediction.**



Anchor HCE RA QP22

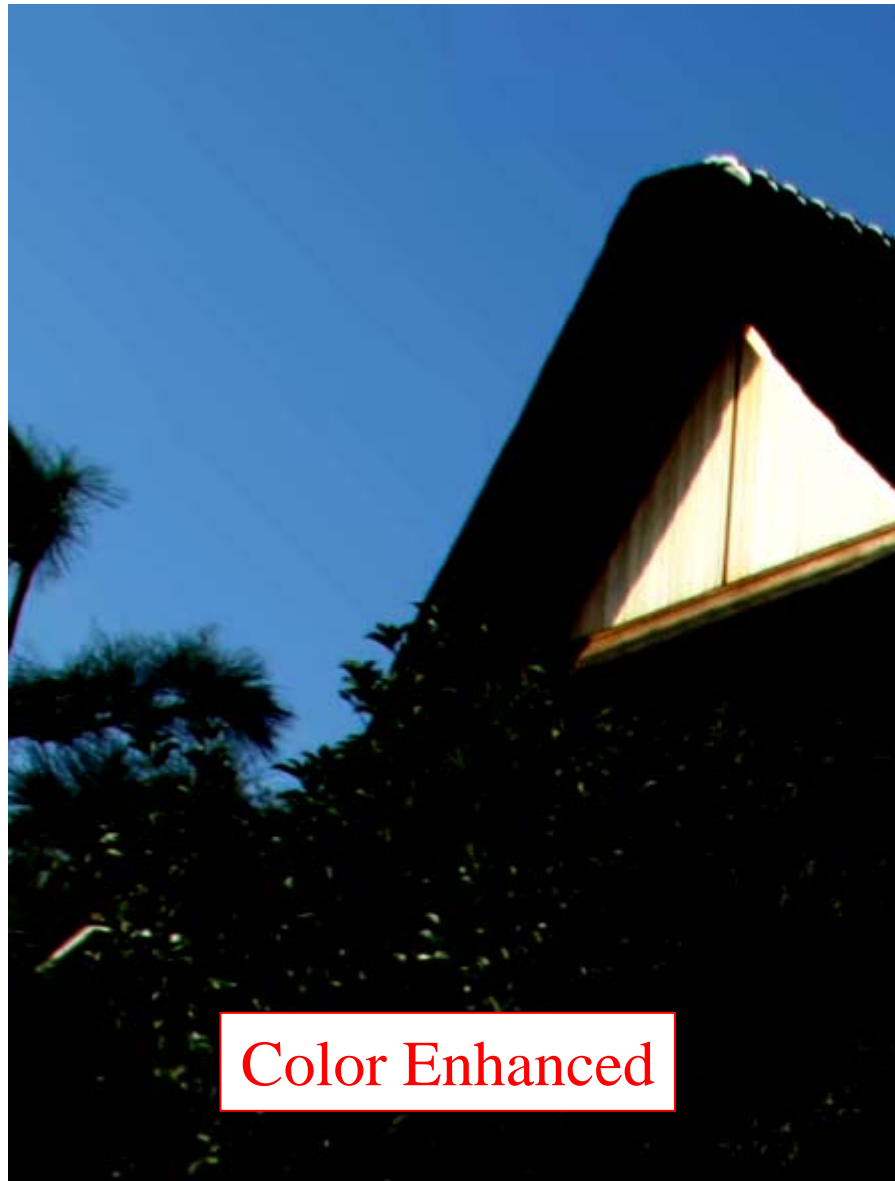


Planar HCE RA QP22

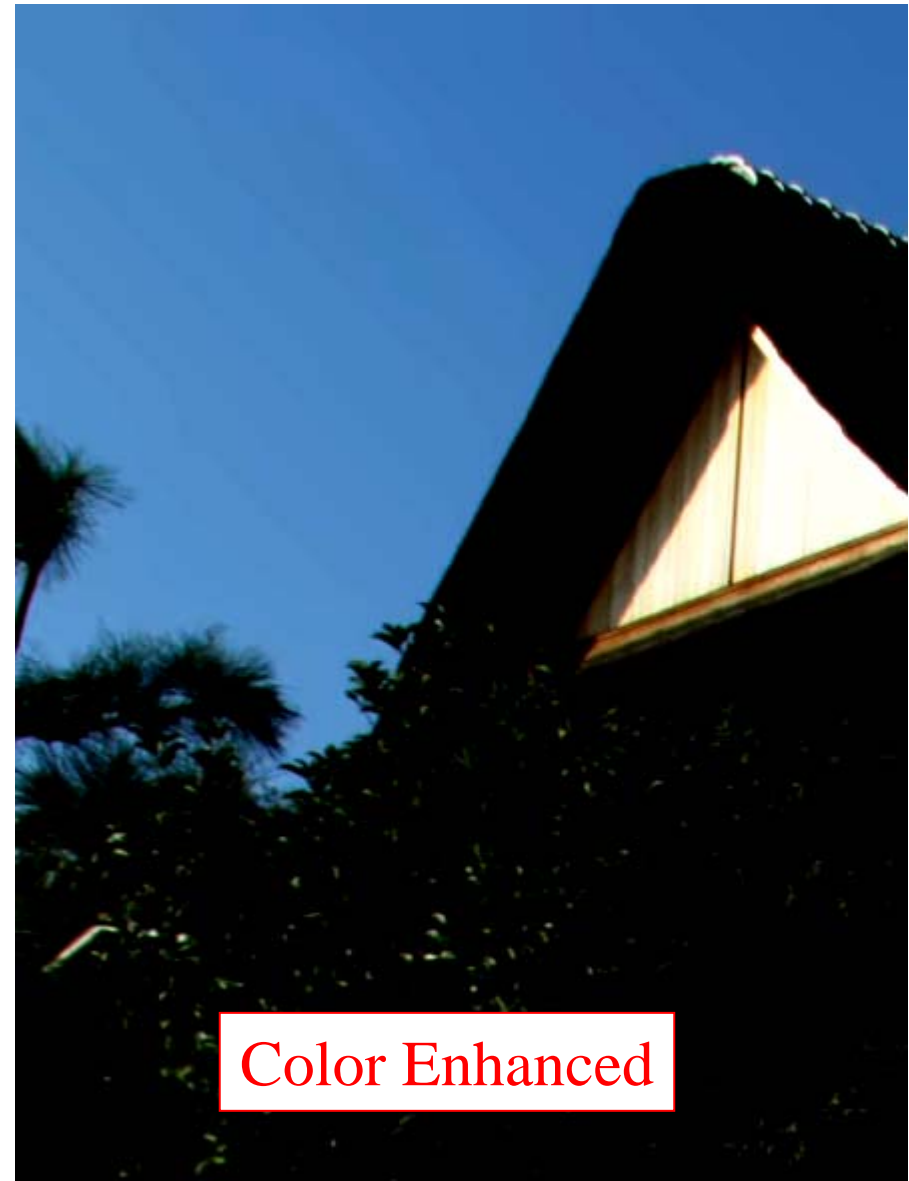


**Banding artifacts in sky regions are not reduced by Planar prediction.**

Anchor HCE RA QP22



Planar HCE RA QP22



**Banding artifacts in sky regions are not reduced by Planar prediction.**

Anchor HCE RA QP22



JCTVC-D043 HCE RA QP22



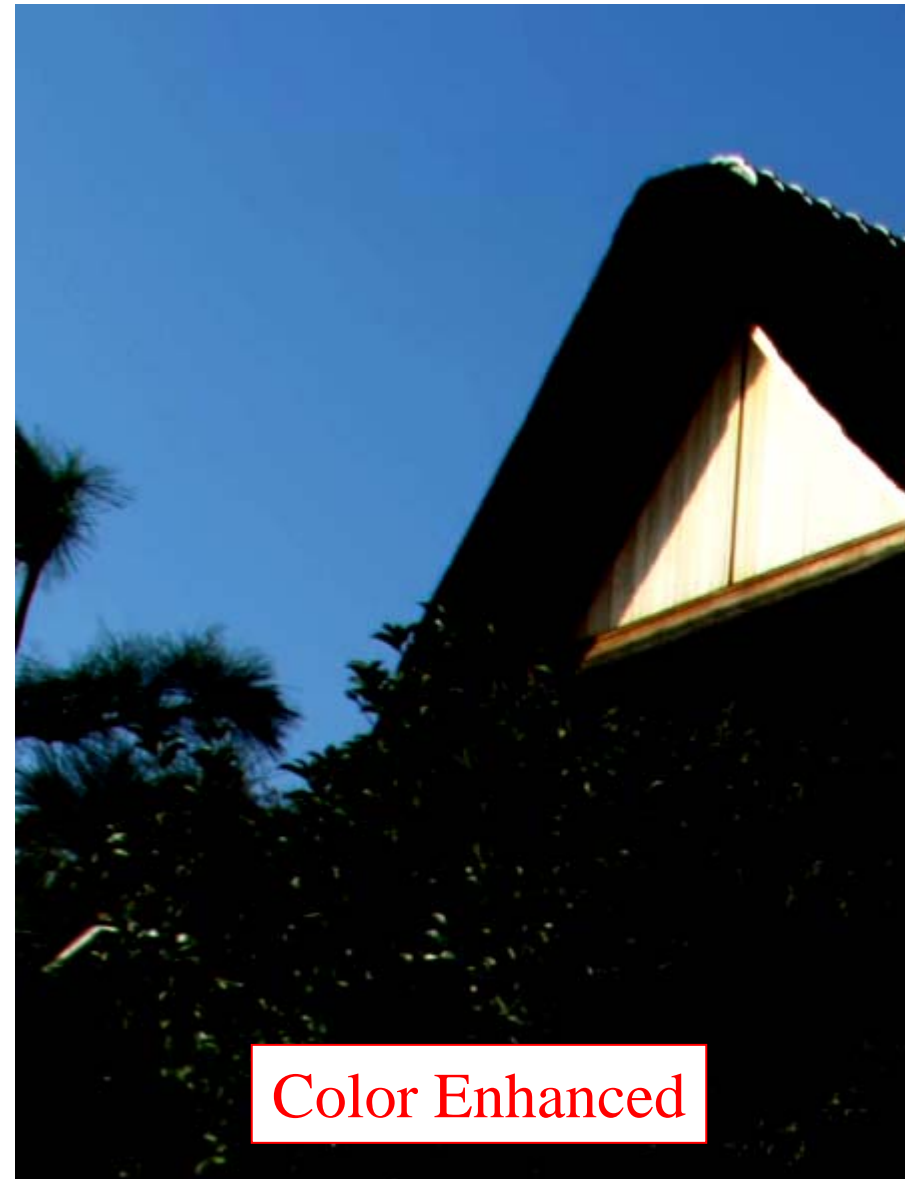
**Banding artifacts in sky regions are significantly reduced by NEC Debanding filter.**



Anchor HCE RA QP22



JCTVC-D043 HCE RA QP22



**Banding artifacts in sky regions are significantly reduced by NEC Debanding filter.**