

BasketballDrill (No. 0) QP=32 results for low complexity random access
(Left: Anchor 33.99dB 916.51Kbps, Right: DCIM 34.01dB 900.90Kbps)



Cropped and color enhanced

Diagonal edge is finely reconstructed in DCIM result.



Anchor



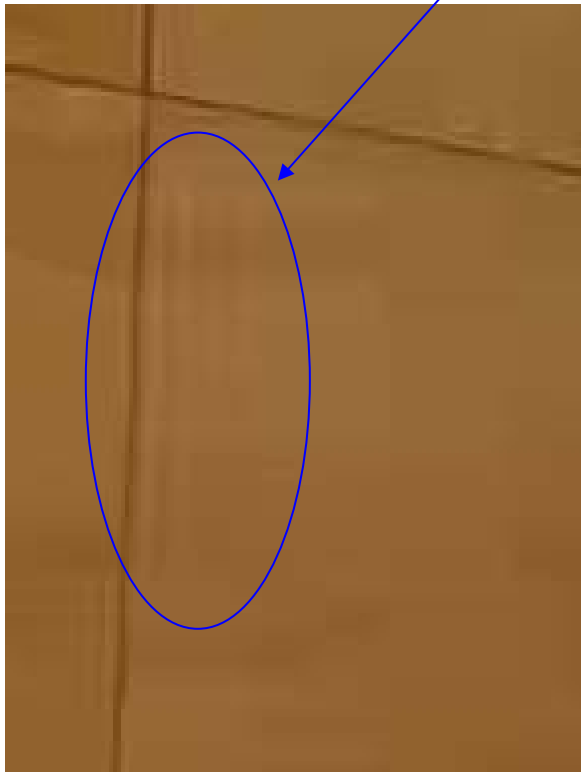
DCIM

BasketballDrive (No. 432) QP=37 results for low complexity random access
(Left: Anchor 33.34dB 1684.29Kbps, Right: DCIM 33.35dB 1655.84Kbps)

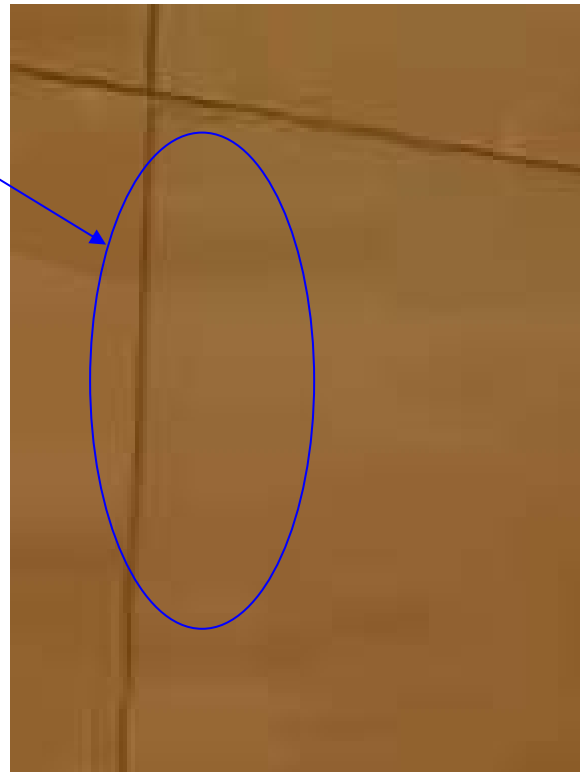


Cropped and color enhanced

Artificial vertical lines are avoided in DCIM result.



Anchor



DCIM